

**Features:**

- \* Single row Side Entry.
- \* 2.54mmX7.87mm center.

Mates with: 2011,2012.

**Material:**

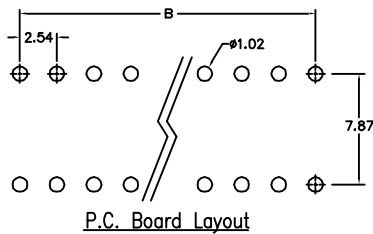
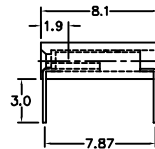
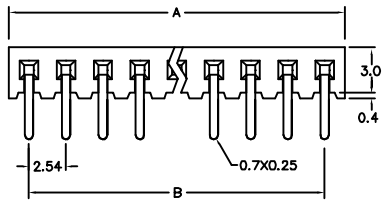
Housing: 30% Glass filled PBT UL94V-0.  
 Contacts: Phosphor Bronze.  
 Plating: Gold plated over nickel.  
 Tin plated over nickel.

**Electrical Characteristics:**

Current Rating: 1 AMP.  
 Insulator Resistance: 5000MΩmin. at DC 500V.  
 Contact Resistance: 20mΩmax. at DC 100mA.  
 Operating Temperature: -55°C ~ +105°C .

**Mechanical Characteristics:**

Insertion Force: 140g avg. (0.64mm sq. pin)  
 Withdrawal Force: 114g avg. (0.64mm sq. pin)



Position	4 Thru 40
Dimension	
A	2.54 X No. of Positions
B	2.54 X No. of Positions -2.54

**Ordering information**

PS10- 1 40 1  
 Series Single Row No. of Pin Per Row 1: Gold Plated  
 2: Tin Plated